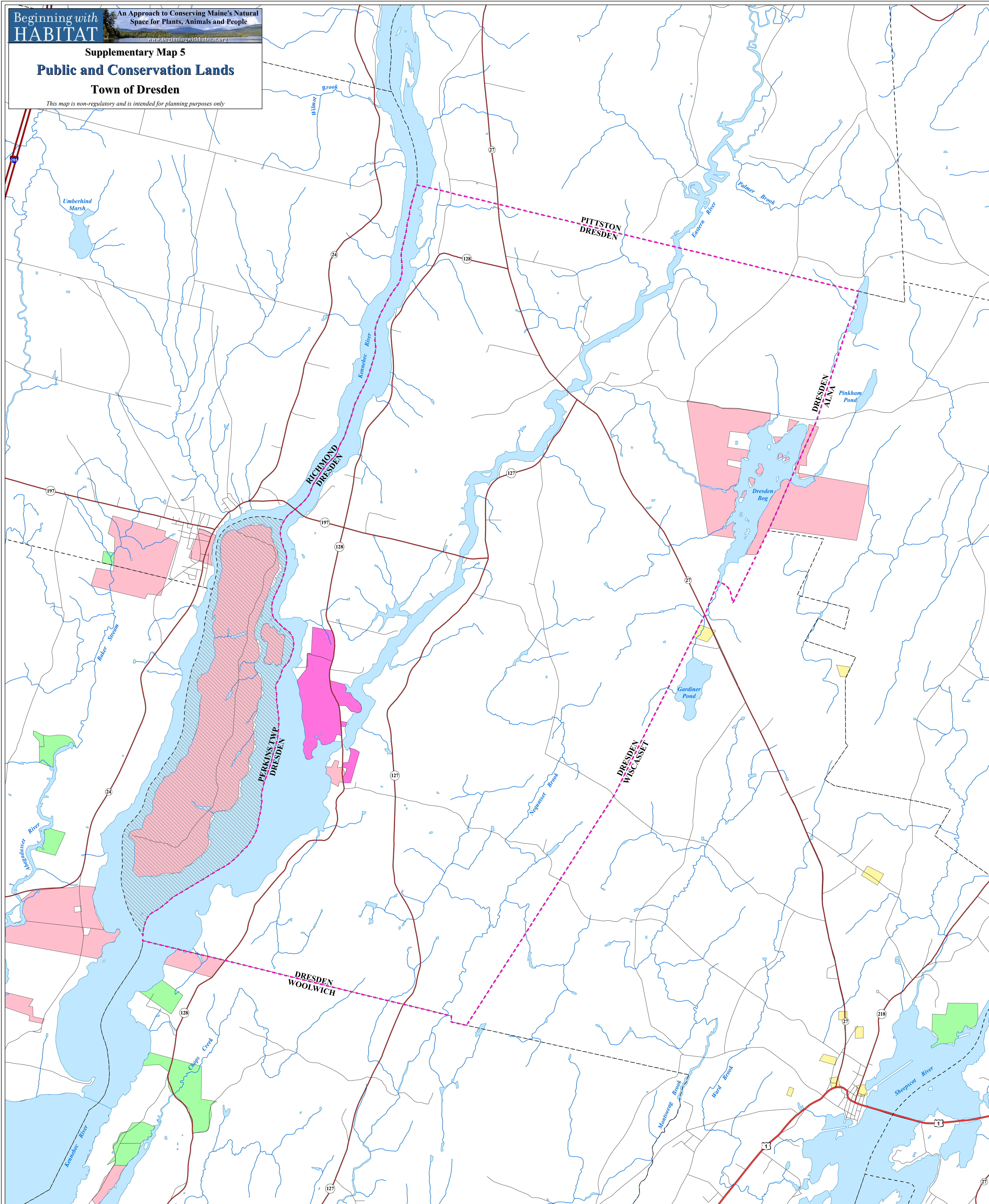


Supplementary Map 5
Public and Conservation Lands
Town of Dresden

This map is non-regulatory and is intended for planning purposes only



Public and Conservation Land Ownership

Conservation lands in Maine are either privately or publicly owned. Conservation of the natural features on the parcel depends upon the managing authority. Not all land owners listed below may occur in the area depicted in this map.

	Acres in Town/City
Unorganized Township	
Federal	Zero Acres
State	485 Acres
Town	Zero Acres
Private Conservation	Zero Acres
Easement	301 Acres

Total Public and Conservation Lands: 786 Acres
Total Size of Town, City, or Municipality: 19,486 Acres

Ownership of public and conservation lands changes often. The data presented in this map was the most complete information available when this map was created. For the most accurate and current information about land ownership, consult with the local assessor and/or other local land management agencies. Public access may not be permitted on all conservation lands mapped here. Please contact the landowner for permission to access these parcels.

Data Sources

Public and Conservation Lands:
The Nature Conservancy of Maine (mapped at various scales)
Town Boundaries, Hydrology:
Maine Office of GIS (1:24,000)
Roads:
Maine Dept. of Transportation (2002, 1:24,000)